

# NPDA-BC Certification by Professional Portfolio

## WELCOME TO YOUR NPDA-BC PROFESSIONAL PORTFOLIO!

You have chosen to complete the NPDA-BC Professional Portfolio to demonstrate competence as a nursing professional development specialist in an advanced role. Your professional portfolio certification includes three different learning paths in your classroom.

## Nursing Professional Development (NPD)

PRACTICE MODEL

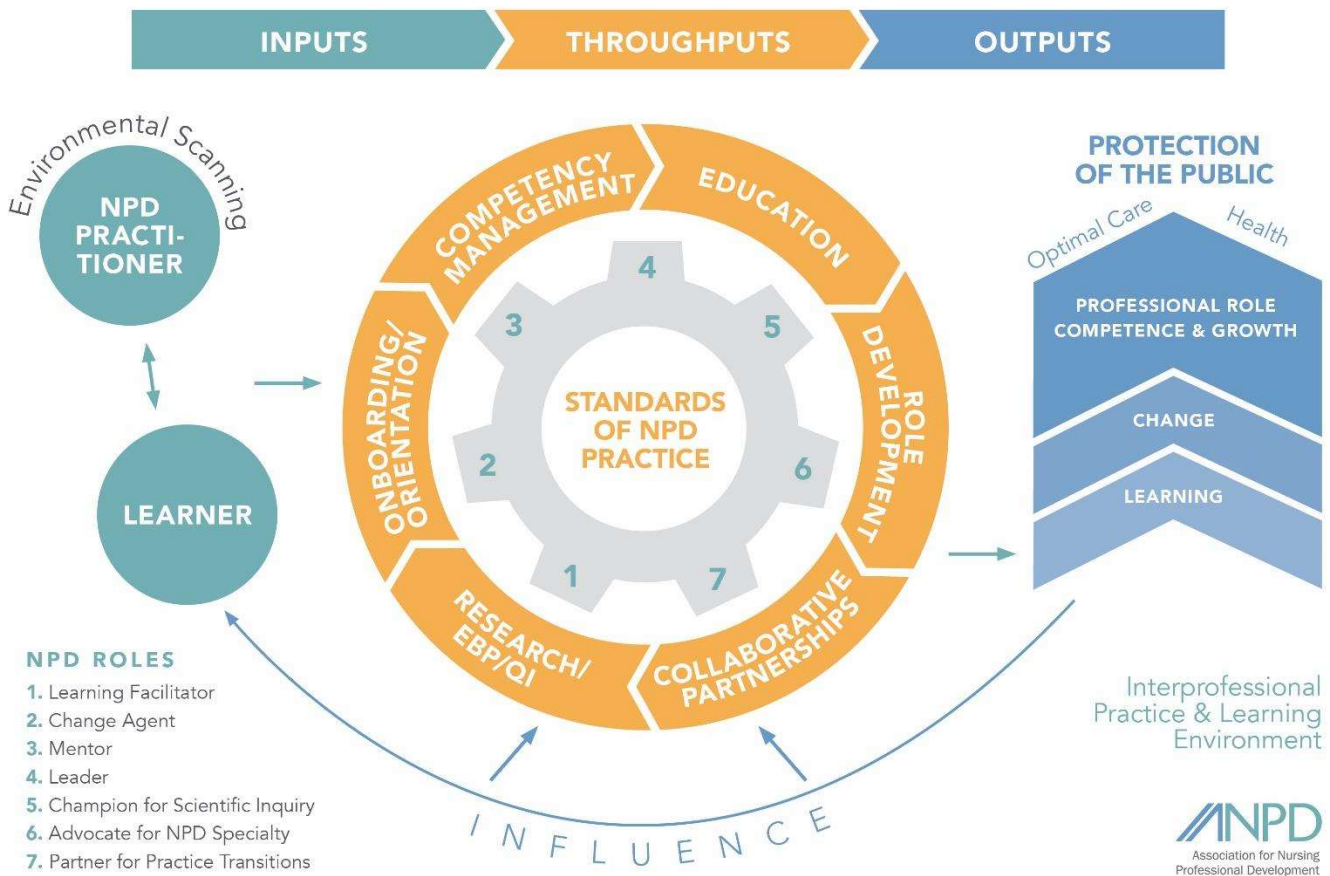


Image used with permission of the Association for Nursing Professional Development. ©

All learning paths must be completed to earn your certification.

### Learning Paths (Courses)

1. Learning path 1: Introduction
  - View and download your resource documents.
2. Learning path 2: Exemplars (select three of the six throughput responsibilities)
  - In this learning path you will be required to submit three separate exemplar documents.
  - You will self-enroll in the three throughput responsibilities you wish to demonstrate through an exemplar (not already addressed in an activity table).
3. Learning path 3: Activity Table (select the remaining three throughput responsibilities not selected for exemplar)
  - In this learning path you will be required to submit three separate activity tables.
  - You will self-enroll in the three throughput responsibilities you wish to demonstrate through an activity table (not already addressed in an exemplar).

### GETTING STARTED ON YOUR PORTFOLIO JOURNEY

In the introduction learning path, you have a module titled instructions and resources. The resources are there to assist you in completing your portfolio documents.

- ❖ Definitions of throughputs (responsibilities and roles)
- ❖ List of Standards of NPD practice
- ❖ SMART goal formatting examples
- ❖ Copies of the scoring rubrics (this is how you will be scored)

The primary focus of the portfolio submissions begins with completing either an exemplar or an activity table (3 each) based on your responsibilities as an NPD specialist in an advanced role.

The required content and documentation are different based on whether you are completing the exemplar or the activity table. Please review the requirements listed in the scoring rubric to ensure accuracy with your submission.

You must address all six throughput responsibilities. Three must be documented as exemplars and three must be documented as activity tables. Only address **one throughput** per document.

Within the six total submissions you must address all throughput roles and all Standards of NPD Practice. These are not required for each document but rather represented across the totality of the six submissions.